

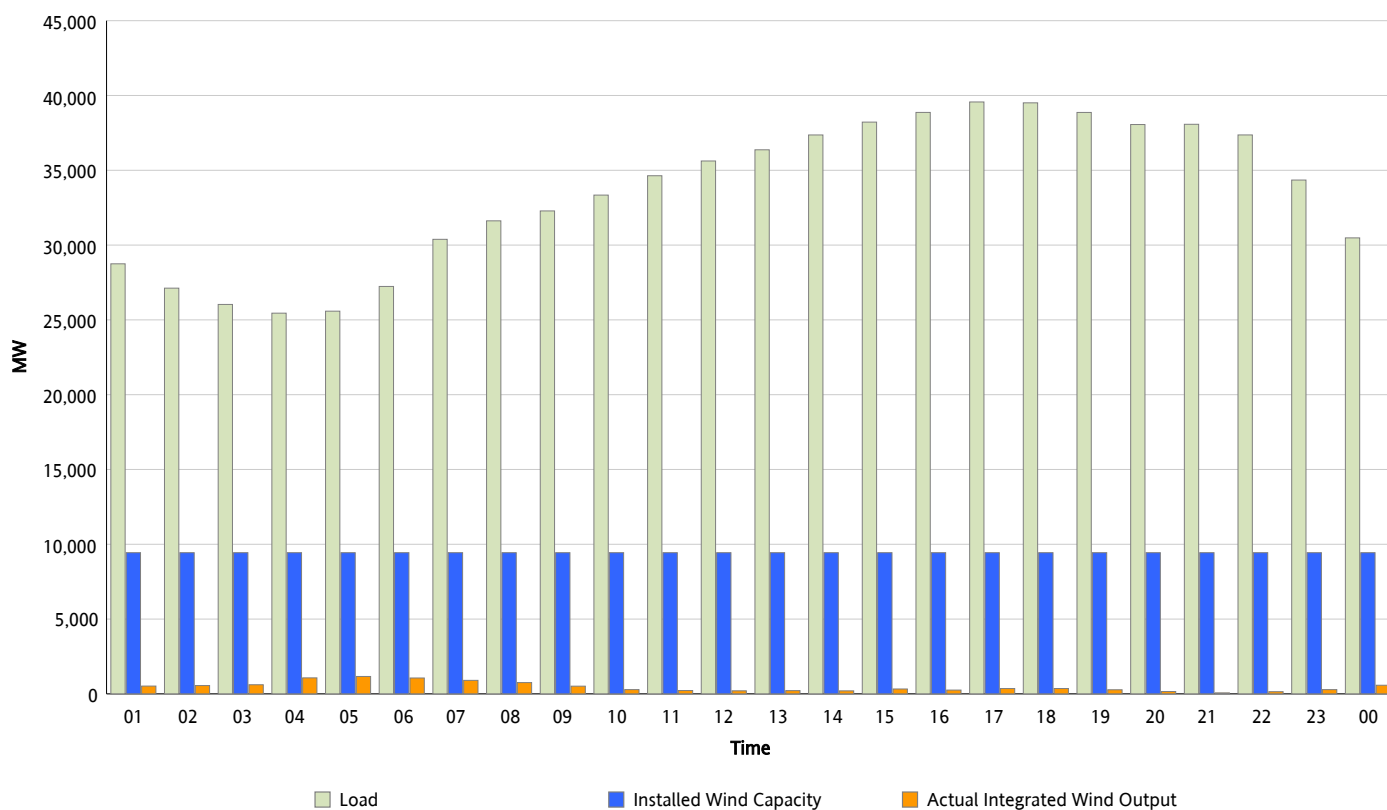


ERCOT Grid Operations

Wind Integration Report : 05/15/2012

Peak Load	39,569 MW
Load Peak Hour (HE)	17
Wind Over Peak	357 MW
Wind Record 04/13/12	7,925 MW
Max Wind Value*	1,353 MW
Wind Peak Time	04:06
Wind Integration %	5.32 %

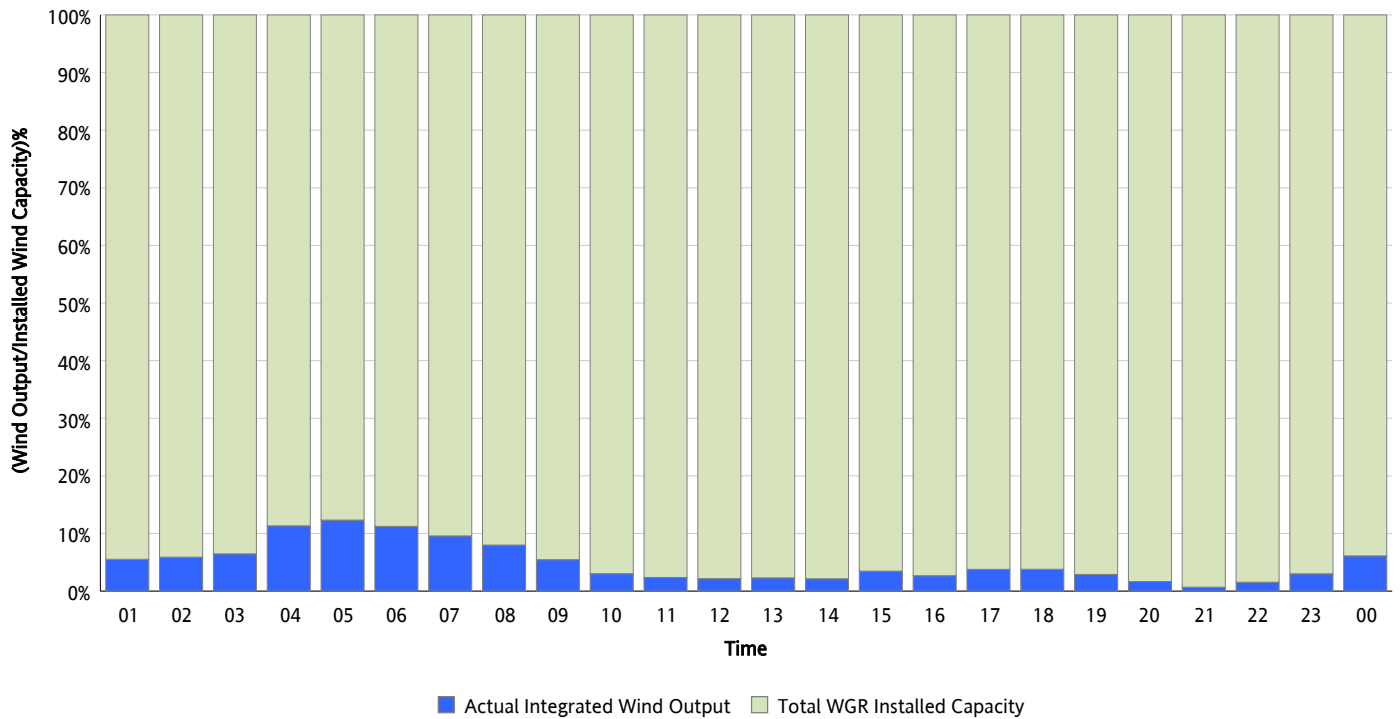
Hourly Average Actual Load vs. Actual Wind Output
05/15/2012



* Wind Record and Wind Max represent instantaneous values and the rest of the values are integrated over the hour

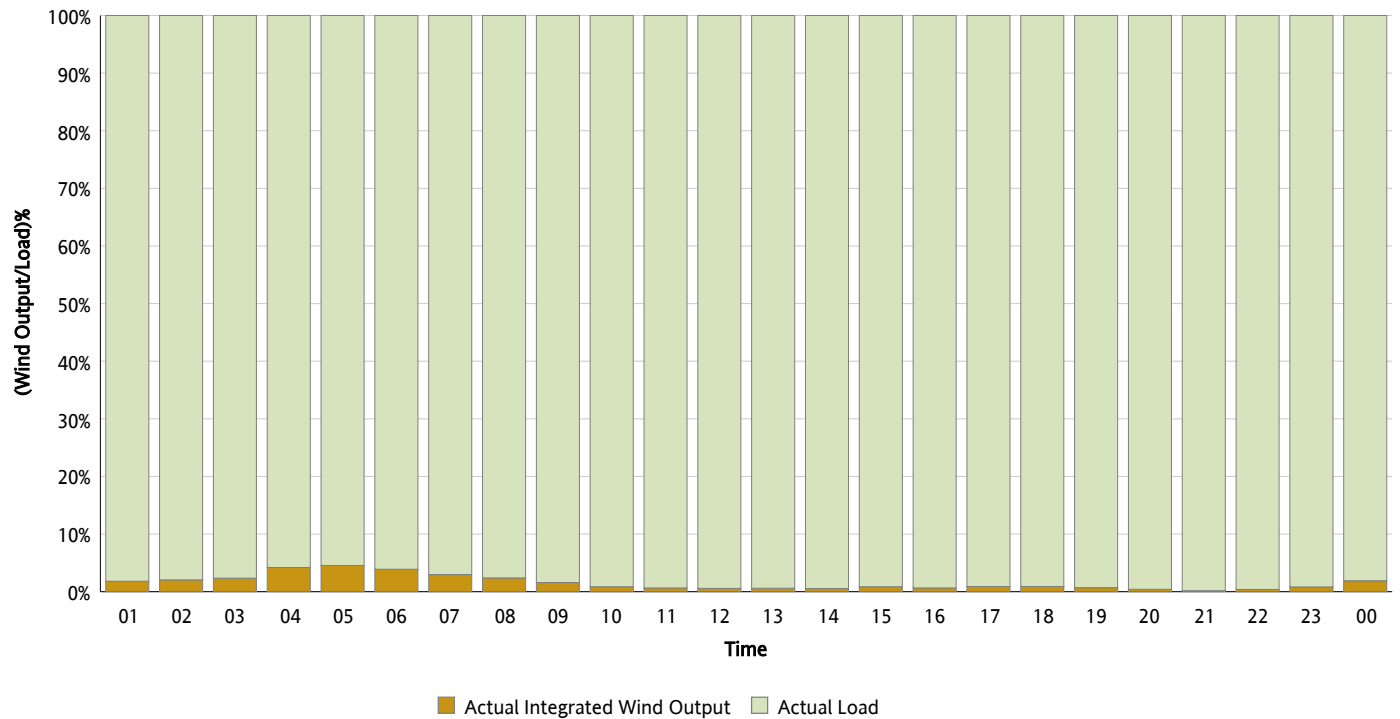
Actual Wind Output as a Percentage of the Total Installed Wind Capacity

05/15/2012



Actual Wind Output as a Percentage of the ERCOT Load

05/15/2012



ERCOT Load vs. Actual Wind Output

05/08/2012 - 05/15/2012

